



GEARHEADS(POWERFUL TYPE)

Frame size 90mm sq. (3.54 in. sq.)

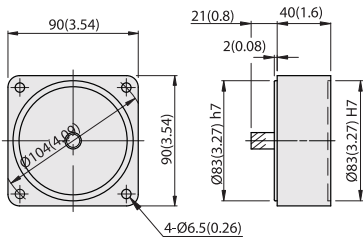
BALL BEARING TYPE

DIMENSIONS

Unit : mm(inch)

DECIMAL GEARHEAD

E9V10D

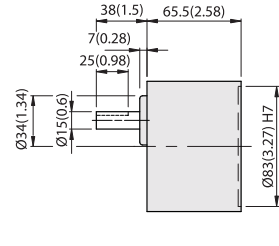


WEIGHT 0.6kg (1.3 lb)

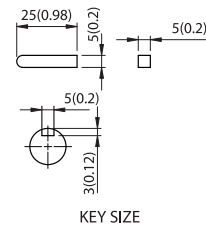
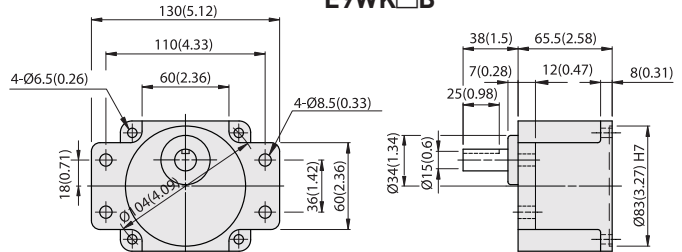


GEARHEAD

E9VK□B



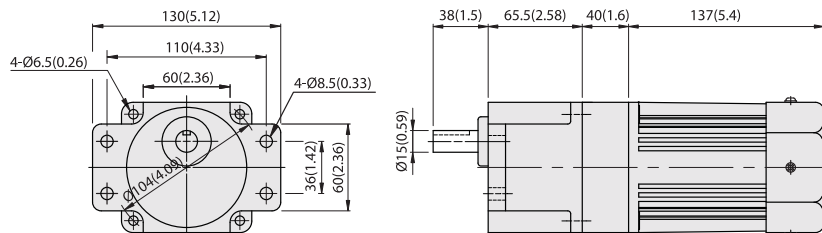
E9WK□B



MODEL	GEAR RATIO	WEIGHT		BOLT
		kg	lb	
E9VK□B	1/3~1/200	1.5	3.3	M6x95
E9WK□B	1/3~1/200	1.6	3.5	M8xL30

KEY SIZE

E9WK□B + E9V10D + E9I120P□H



RATED TORQUE OF GEARHEAD

MODEL	Speed(rpm)	Ratio	500	300	200	120	100	60	50	30	20	15	10	9	6	5	3	2	1
				50Hz	3	5	7.5	12.5	15	25	30	50	75	100	150	166.7	250	300	500
	60Hz	3.6	6	9	15	18	30	36	60	90	120	180	200	300	360	600	900	1800	
E9VK□B	kg-cm		22.8	38.1	57.1	85.8	102.9	155.1	186.1	200	200	200	200	200	200	200	200	200	200
E9WK□B	N-m		2.24	3.73	5.60	8.41	10.09	15.20	18.24	19.60	19.60	19.60	19.60	19.60	19.60	19.60	19.60	19.60	19.60
E9V10D(DECIMAL)	oz-in		317	529	793	1191	1429	2154	2585	2777	2777	2777	2777	2777	2777	2777	2777	2777	2777

With Decimal Gearhead

- * The normal torque is that the motor and gearhead are directly coupled.
- * Insert the denominator of reduction ratio in □ of gearhead model name.
- * Actual rotation speed is 2~15% less than synchronous speed.
- * ■ Color indicates that the rotation of gearhead shaft is in opposite direction as output shaft of motor.



GEARHEADS(ULTRA POWERFUL TYPE)

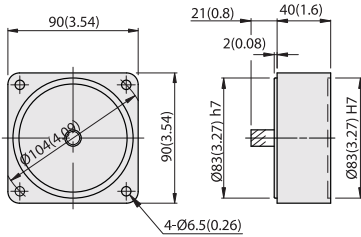
Frame size 90mm sq. (3.54 in. sq.)

BALL BEARING TYPE

DIMENSIONS

DECIMAL GEARHEAD

E9V10D



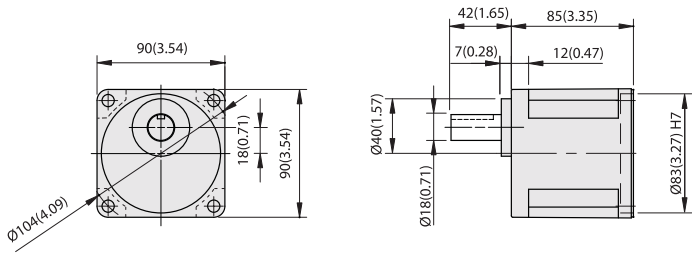
WEIGHT 0.6kg (1.3 lb)



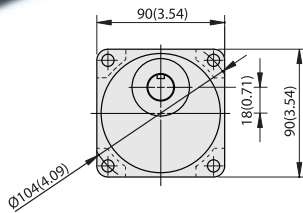
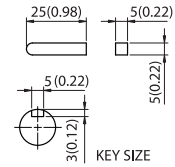
GEARHEAD

Unit : mm(inch)

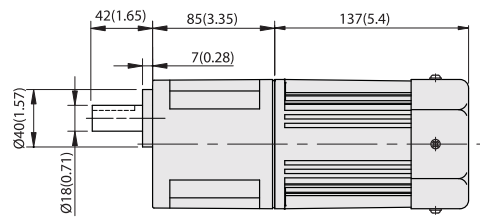
E9UK□B



MODEL	GEAR RATIO	WEIGHT		BOLT
		kg	lb	
E9UK□B	1/3~1/200	1.95	4.3	M8xL30



E9UK□B + E91120P□H



RATED TORQUE OF GEARHEAD

MODEL	Speed(rpm) Ratio	500	300	200	120	100	60	50	30	20	15	10	9	6	5	3	2	1	
		50Hz	3	5	7.5	12.5	15	25	30	50	75	100	150	166.7	250	300	500	750	1500
		60Hz	3.6	6	9	15	18	30	36	60	90	120	180	200	300	360	600	900	1800
E9UK□B	kg-cm	22.8	38.1	57.1	85.8	102.9	155.1	186.1	300	300	300	300	300	300	300	300	300	300	
E9V10D(DECIMAL)	N-m	2.24	3.73	5.60	8.41	10.09	15.20	18.24	29.40	29.40	29.40	29.40	29.40	29.40	29.40	29.40	29.40	29.40	
	oz-in	317	529	793	1191	1429	2154	2585	4166	4166	4166	4166	4166	4166	4166	4166	4166	4166	

With Decimal Gearhead

- *The normal torque is that the motor and gearhead are directly coupled.
- *Insert the denominator of reduction ratio in □ of gearhead model name.
- *Actual rotation speed is 2~15% less than synchronous speed.
- *■Color indicates that the rotation of gearhead shaft is in opposite direction as output shaft of motor.