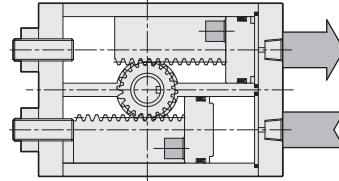
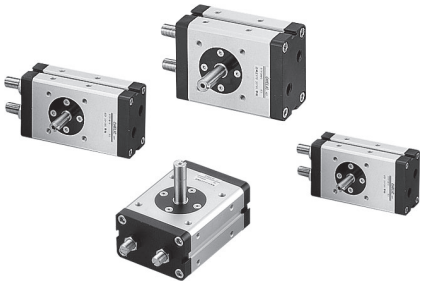


RTP series - Rotary cylinder

Operating specification • Ordering expression

CHELIC

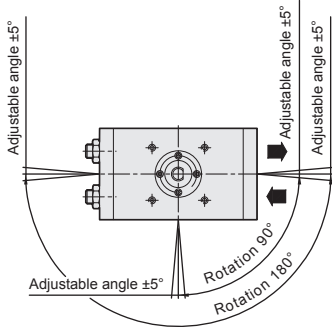
Internal structure



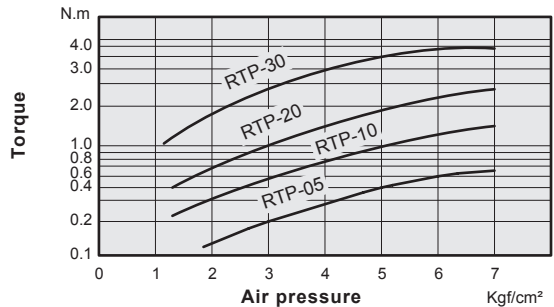
Specification

Item	Model	RTP05 - <input type="checkbox"/>	RTP10 - <input type="checkbox"/>	RTP20 - <input type="checkbox"/>	RTP30 - <input type="checkbox"/>
Operation		Double acting			
Fluid		Air			
Torque	N·m	0.38	0.88	1.86	2.94
Bore size		Ø16	Ø20	Ø25	Ø30
Rotation angle		90° 180°			
Adjustment angle		+5° ~ -30°			
Prot size		Rc1/8			
Pressure range	kgf/cm ² (kpa)	1.5~7(150~700)			
Ambient and fluid temperature	°C	0~50			

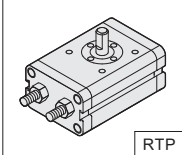
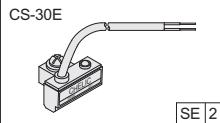
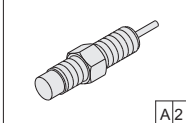
Rotation angle and Rotation range



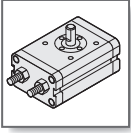
Output characteristics



How to order

RTP	10	×	180	-	2	D	-	SE	2	-	A	2
Model	Torque		Rotation angle		Axis type			Sensor switch			Shock absorber	
	5 : 0.38 N·m 10 : 0.88 N·m 20 : 1.86 N·m 30 : 2.94 N·m		90 - 90° 180 - 180°		None : Single rod 2D : Double rod							
								SE 2			A 2	

[SE] : Sensor switch code (CS-30E) A : Shock absorber
 [SEN] : Sensor switch code (CS-30EN) 1 = 1 PCS
 [SEP] : Sensor switch code (CS-30EP) 2 = 2 PCS (option)
 [2] : Number of sensor switch 1 = 1 PCS

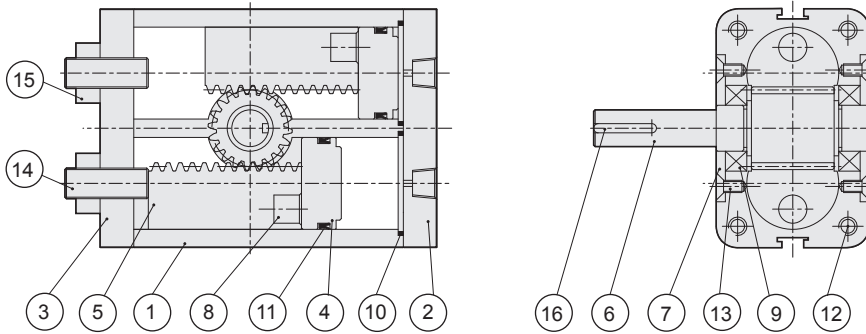


RTP series - Rotary cylinder

Components • Material list

CHELIC

Internal structure



Components and Material list

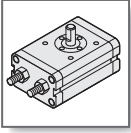
No.	Item	Material	No.	Item	Material
01	Body	Aluminum alloy	09	Bearing	Bearing stell
02	Front cover	Aluminum alloy	10	Front cover O-ring	NBR
03	Rear cover	Aluminum alloy	11	Piston packing	NBR
04	Piston	Teflon	12	Cap screw	Alloy steel
05	Gear	Plastic steel	13	Shaft cap screw	Alloy steel
06	Gear shaft	Medium carbon steel	14	Adjustment bolt	Alloy steel
07	Shaft cap	Aluminum alloy	15	Nut	Medium carbon steel
08	Magnet	Rare earth metals	16	Key	Medium carbon steel

Packing and O-Ring list

Item	Piston packing	Cover O-ring
Number	2	2
Bore size(mm)		
Ø05	DYP - 05	16.8 x 1.3
Ø10	DYP - 10	20 x 1.6
Ø20	DYP - 20	25.7 x 1.78
Ø30	DYP - 30	30 x 2

Weight

Item	Weight (g)	
	90°	180°
Bore size		
RTP Ø05	320	377
RTP Ø10	426	519
RTP Ø20	665	803
RTP Ø30	1068	1462

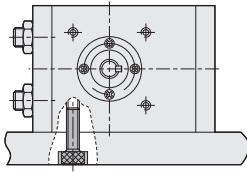


RTP series - Rotary cylinder

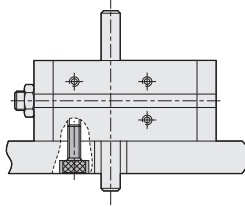
Mounting type • External dimensions

CHELIC

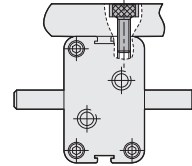
Mounting type



● Side mounting



● Bottom mounting



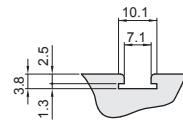
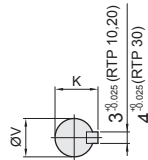
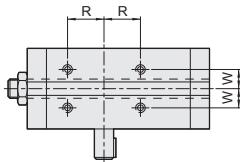
● Top mounting

External dimension

● RTP-5 Axis type

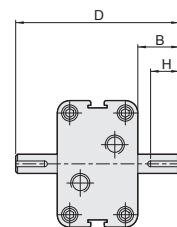
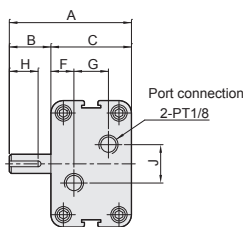
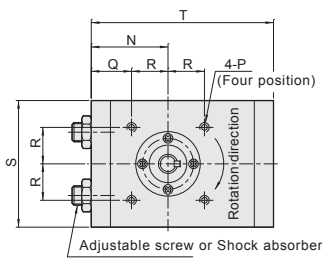
● RTP10~30 Axis type

● The groove of sensor switch

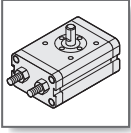


● Single axis type (Standard)

● Twin axis type(2D)



Model	A	B	C	D	F	G	H	J	K	N	P	Q	R	S	T	V	W
RTP05 - 90°	52	20	32	72	11	10	10	16	5.5	30.5	M5x0.8P, dp 7	14.5	16 ^{±0.1}	52	70	6 ^{h7}	8
RTP05 - 180°										35.5		19.5			86		
RTP10 - 90°	61	25	36	86	11	14	19	14	9.2	34.5	M5x0.8P, dp 7	17.5	17 ^{±0.1}	56	81	8 ^{h7}	9
RTP10 - 180°										44		27			103		
RTP20 - 90°	72	30	42	102	12	18	19	20	11.2	40	M5x0.8P, dp 7	21	19 ^{±0.1}	66	94	10 ^{h7}	10
RTP20 - 180°										52		33			120		
RTP30 - 90°	90	40	50	130	12	26	19	36	13.2	50	M6x1.0P, dp 8	22	28 ^{±0.1}	78	110	12 ^{h7}	15
RTP30 - 180°										71		43			150		

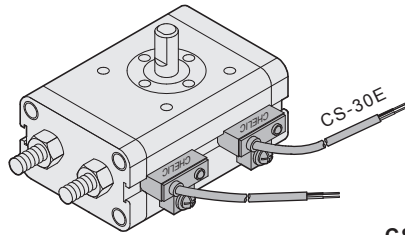


RTP series - Rotary cylinder

Sensor switch installation • Setting

CHELIC

▶ Sensor switch installation



● RTP Type

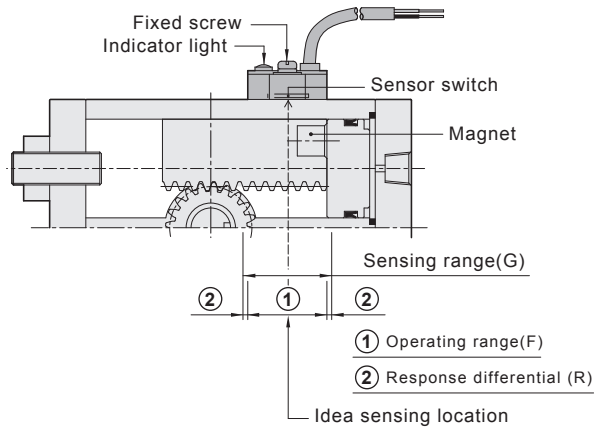


CS-30E

(Please refer to P7-2.11 formula for sensor switch)

▶ Setting and Operating of sensor switch

● CS - 30E



▶ Sensing range

Sensor switch is fixed on the cylinder body.
The magnetic piston head will activate the sensor switch when it enters the operating range.

Unit : mm

Model	CS-30E, CS-30EN(P)	
Bore size	Operating range (F)	Response differential(R)
RTP-05	10	1.5
RTP-10	8.5	1.0
RTP-20	7	1.0
RTP-30	8.5	1.0

▶ Operating range

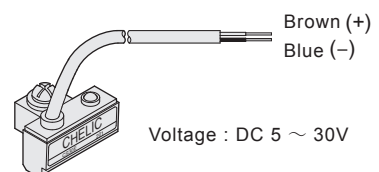
When piston head moves the switch setting and adjustment will be based on the responding range generated by the magnetic field and the switch. (Please refer to the right table)

▶ Sensor switch introduction



Voltage : DC 5 ~ 240V
AC 5 ~ 240V

CS-30E



Voltage : DC 5 ~ 30V

CS-30EN(P)