

AGM 71 4b

3-Phase 230/400 V 50 Hz

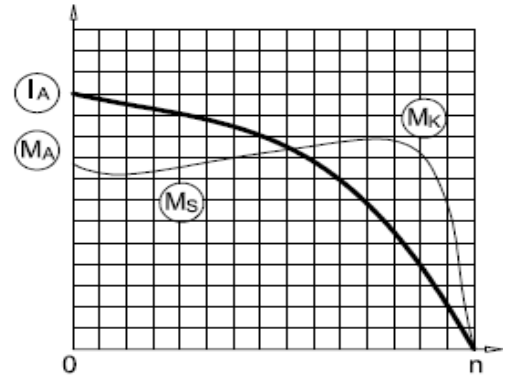
Duty Type : S1

Degree of protection : IP 55 (TEFC)

Insulation class : F (155 °C)

Temp rise : Class B (80K)

Mounting Design : B3



ELECTRICAL DESIGN

Direct On Line

Rated output (kW) : 0.37

Locked rotor Current – I_a (A) : 4

I_a / I_n : 3.7

Speed (rpm) : 1390

Locked rotor Torque – M_a (Nm) : 6

M_a / M_n : 2.2

Rated current (A) : 1.15

Y / Δ Starting

Torque – M_n (Nm) : 2.54

Locked rotor Current – I_a (A) : -

I_a / I_n : -

Cos φ : 0.68

Locked rotor Torque – M_a (Nm) : -

Efficiency %	4/4	3/4	1/2
	68.1	68.1	67.1

M_a / M_n : -

Moment of inertia J (kgm)² : 0.00054

Breakdown Torque – M_k (Nm) : 6

M_k / M_n : 2.5

MECHANICAL DESIGN

Frame : Aluminium

End shields : Aluminium

Cooling fan : Plastic

Terminal box : Plastic

Cable gland : Pg 16

No of cable glands : 1

Bearing Arrangement

Standard design

Drive End

6202 ZZ

Non Drive End

6202 ZZ

Reinforced design

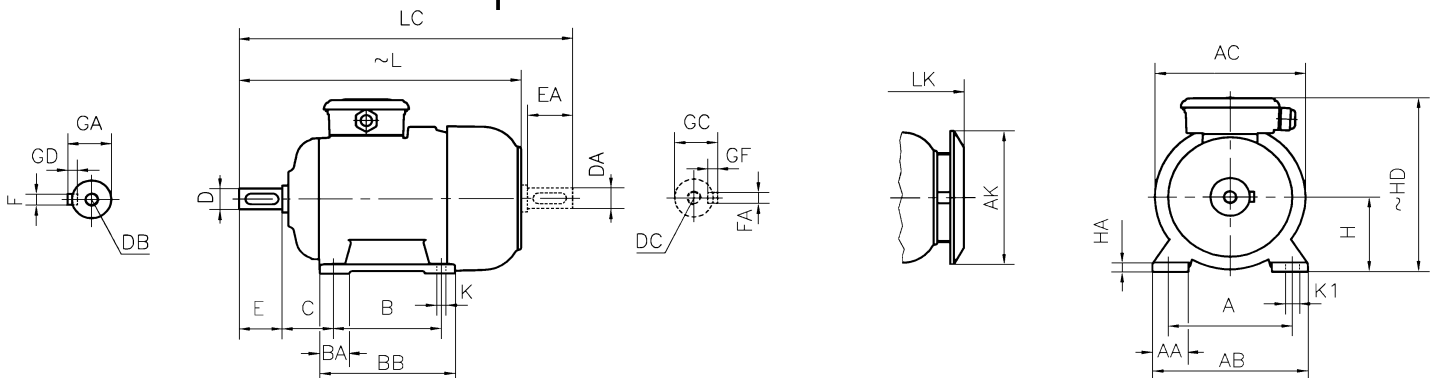
-

-

Noise Level (dB-A) : 44

Paint : RAL 7031- Grey

Approximate weight (kg) : 5.8



DIMENSIONS

Dimensions of foot mounted motors for mounting arrangement : B3, B6, B7, B8, B15, V5, V6

H	HD ~	HA	A	AA	AB	ØAC	ØAK	K	K1	B	B'	BA	BA'	BB	L ~	LC	LK ~	C	E EA	DB DC	ØD ØDA	GA GC	FxGD FAXGF
71	182	10	112	33	140	138	116	7	11	90	-	27	-	108	249	284	278	45	30	M5	14	16	5X5

* Efficiencies are calculated according to indirect method where the additional load losses are determined from exact measurements at different load points.